



# Upcoming Public Sewer Pipeline Replacement Projects in Carmel

Critical infrastructure renewal, investing in the future of Carmel

# Carmel Area Wastewater District – SINCE 1908



- Early on we were responsible for maintaining community cesspools
- Eventually that lead to a “treatment plant” on the beach at Carmel River Beach
- In 1930 an Ordinance required all houses to be connected to Carmel Sanitary District sewer pipes
- In 1937 the District began building the central treatment plant at its current location along with build out of pipes to convey sewage to the plant.



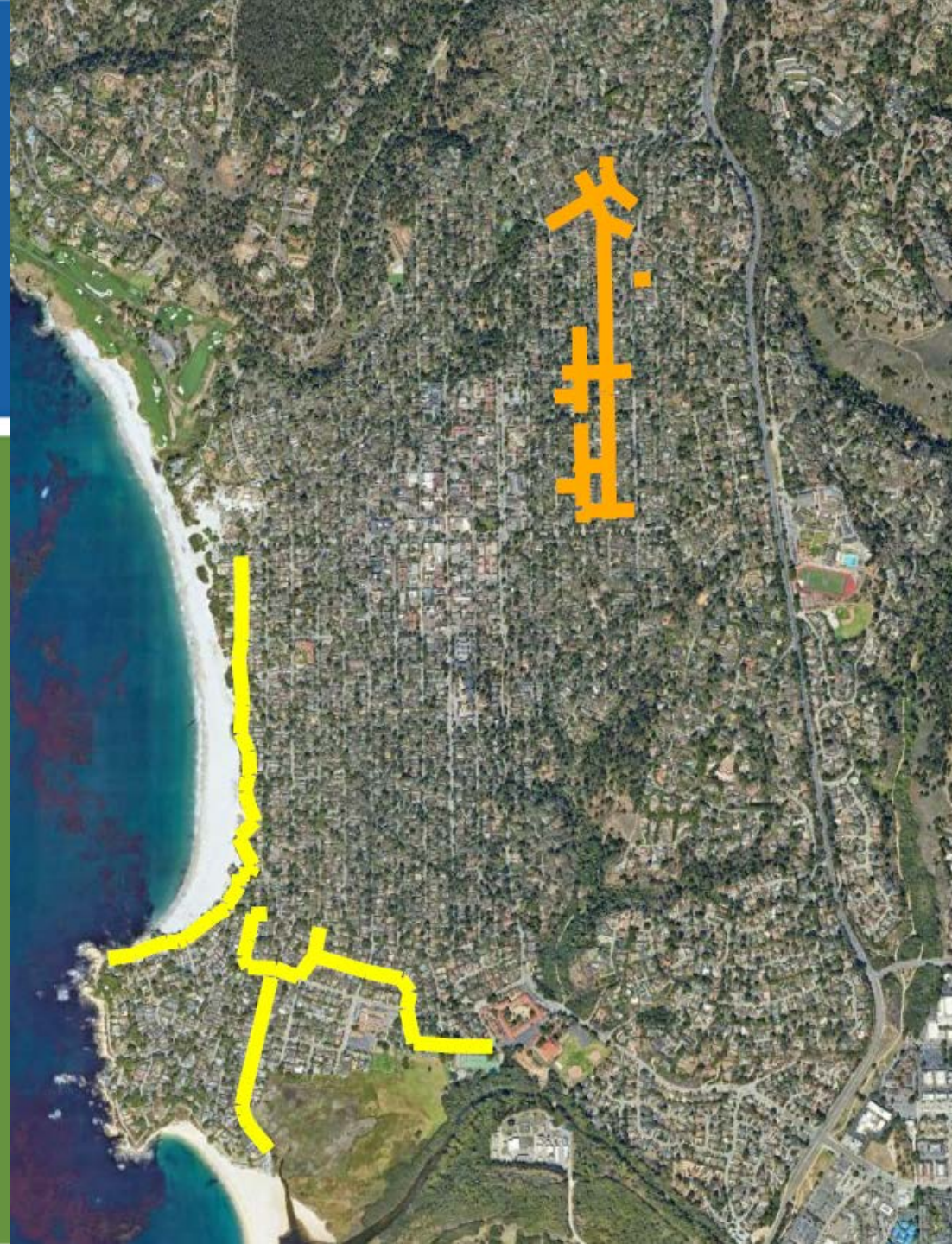
# Two Projects are Planned

## Scenic Road Pipeline Replacement Project

2 Miles of aging clay sewers

## Santa Rita and Guadalupe Pipeline Replacement Project

1.6 Miles of aging clay sewers



# Scenic Rd Pipeline Replacement Project

- Scenic Rd
- Carmelo St
- San Antonio Ave
- Camino Real
- 14<sup>th</sup> Ave
- 15<sup>th</sup> Ave
- Mission Ranch
- Dolores St



# Santa Rita and Guadalupe Pipe Replacement Project

- Santa Rita St
- Guadalupe St
- Cabrillo St
- Pico Ave
- 1<sup>st</sup> Ave
- 3<sup>rd</sup> Ave
- 5<sup>th</sup> Ave
- 6<sup>th</sup> Ave

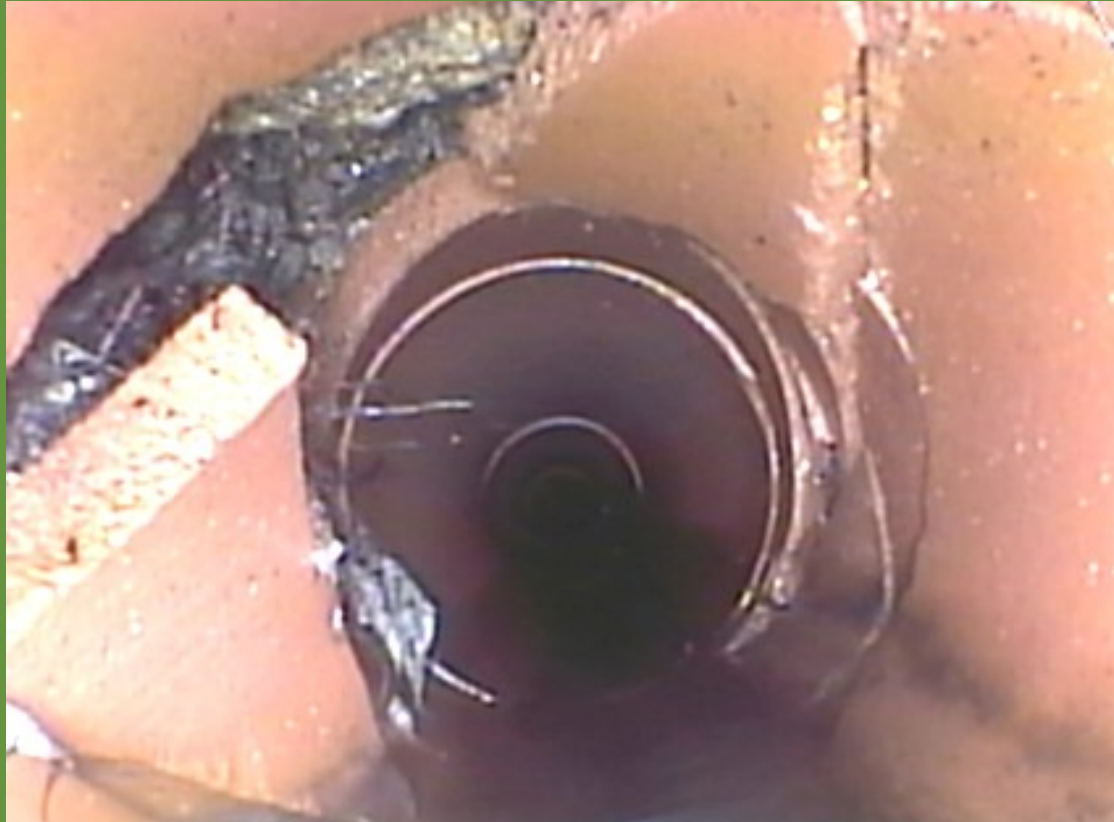


# Why are these projects needed?



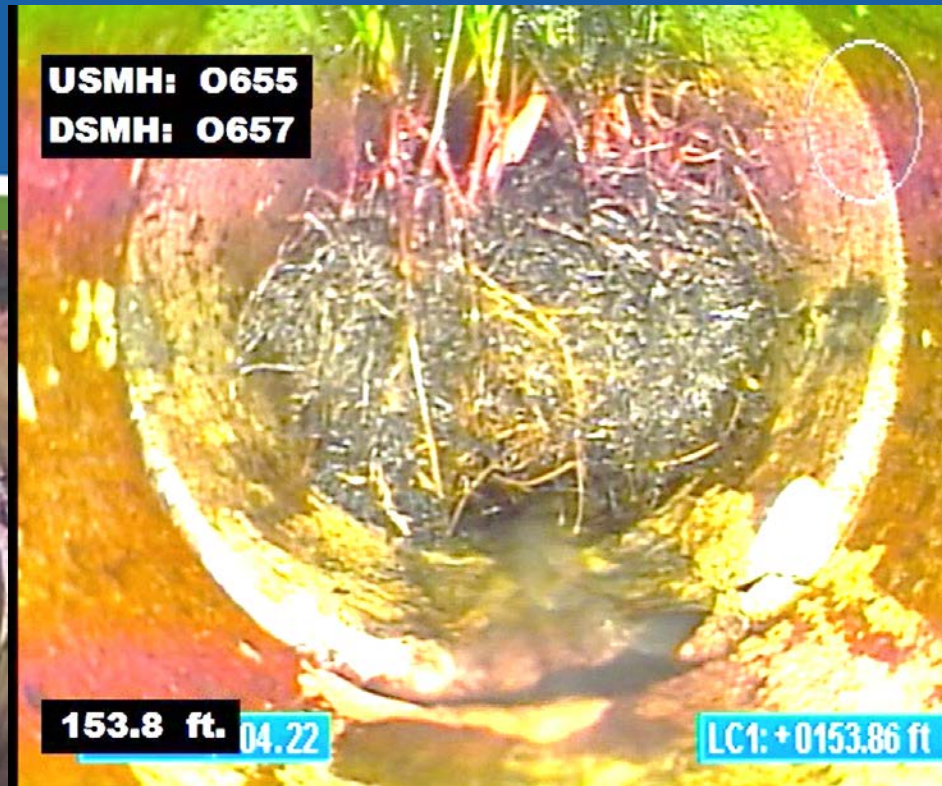
- These projects are a critical piece of the Carmel Area Wastewater District's efforts to replace aging infrastructure and invest in the future of our residents.
- The sewer mains in the project were built in the late 1930's through the 1940's and are 75 years old (and older) and are made of vitrified clay.
- Replacement of the sewer mains greatly improves the long-term reliability of the system.
- Replacement piping will be High Density Polyethylene.

# Clay Pipe is Prone to Fracturing





# Sewer Inspection Video



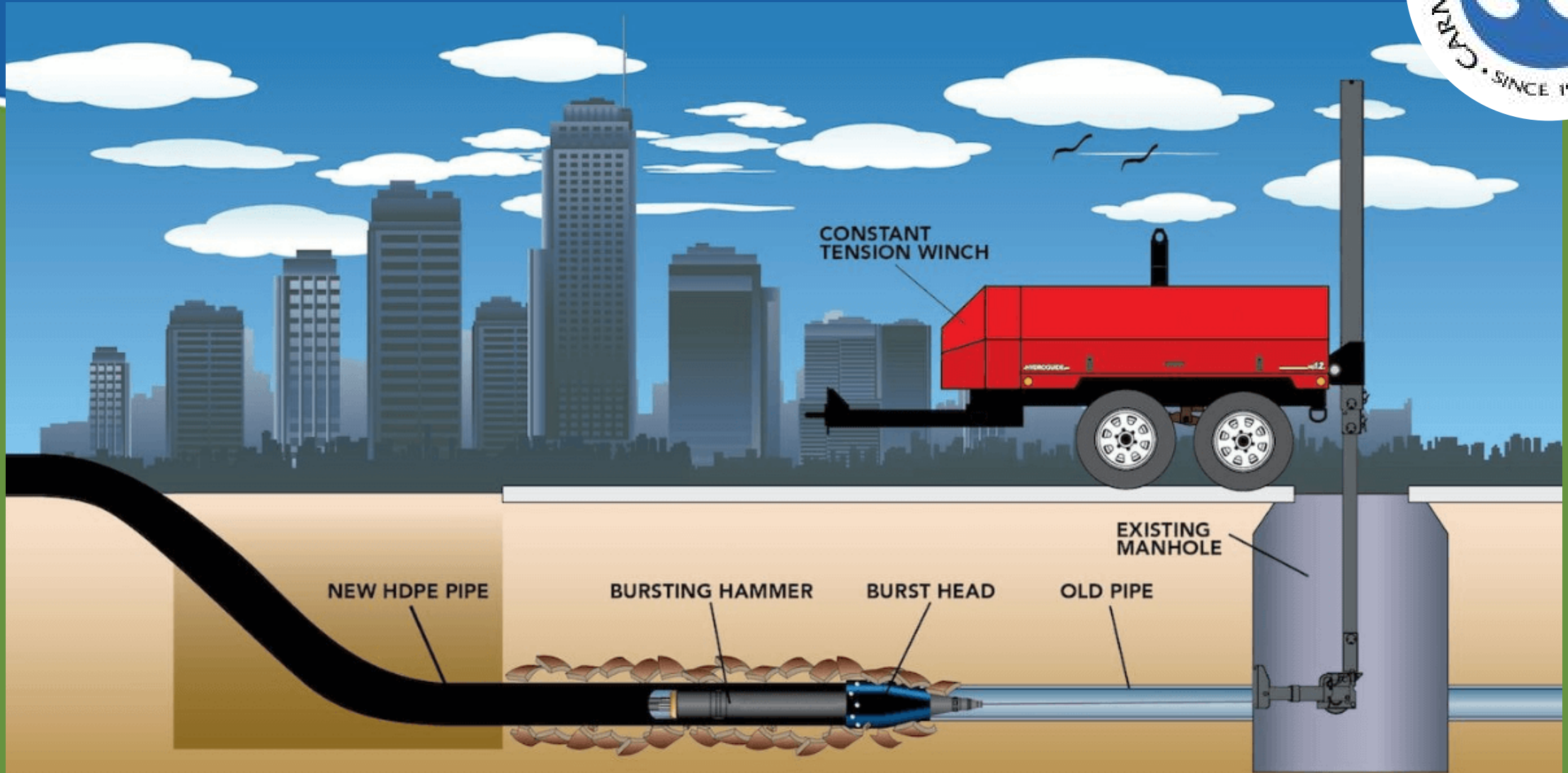
[Video Link](#)

# How long will my street be disturbed?



- The disturbance will be temporary. A typical city block will be impacted for about 1 week as the project will keep moving down the streets.
- Construction by Pipe Bursting will limit the amount of open trenching in the street and reduce the amount of time the street will be impacted.
- Work will be during the day only, and therefore evenings will be quiet as usual.

# What is Pipe Bursting?



# Will I be able to get to my house if I live on one of the affected streets?



- The project will cause road closures to non-resident traffic.
- Residents will be allowed in and out of driveways (although it may take longer to get in/out thru construction area).
- Streets will be open to all traffic at the end of the workday.
- No street parking will be allowed (day or night) in areas of construction.
- Resurfacing of the street will occur at the end of the project and will require a 24-hr road closure to all vehicle traffic (residents included)

# Will emergency services be impacted?



- Emergency services (fire, ambulance, police) will have priority over the construction activities. There will be no reduction in the capacity for emergency response.
- Emergency services will be kept informed of the projects so they are prepared for changing road conditions.

# How will this impact access to the beach or the pedestrian trail on Scenic Rd?



- Pedestrian access to the beach and Scenic Road walking path will not be impacted.
- Parking on the main part of Scenic Road (between 8<sup>th</sup> Ave and 13<sup>th</sup> Ave) will be impacted for about 17 working days.
- The work on the main part of Scenic Road would be scheduled for the “off season”.



# Will this impact Carmel's Special Events?



- No. We are working closely with the City of Carmel and the County of Monterey to minimize everyday impacts and we will not be working during special events like Car Week or the AT&T Pro-Am.
- No work will occur on weekends.



# Will this Project impact Trash Pickup?



- Construction activities will be scheduled around trash pickup so there is no lapse in trash collection.





# Will my sewer service be impacted?



- There will be an ~8-hour period when we are connecting house laterals to the new pipe.
- We will request that you don't use your sewer during this short period.
- However, you will still be able to use your facilities during this time if needed and we will deal with it on the other end of the pipe.



# Will any Schools and Businesses be impacted?



- River School: There will be no disruption to the daily access to the Carmel River School. Additionally, there will be no construction activities taking place during regularly scheduled drop-off and pick-up windows.
- We are also in communication with any businesses that may be impacted by this project. As the construction period gets closer, we will be working directly with businesses to mitigate disruptions.

# What are these Projects Costing Me?



These projects are currently fully funded and do not require additional revenue to finance. We will not be raising rates this fiscal year, and in fact we lowered our residential rates in 2023-2024 due to the District's healthy financial position.

# Does the Scenic Rd work have anything to do with Sea Level Rise?



- This project is not related to potential Sea Level Rise.
- The pipeline on Scenic Rd needs to be rehabilitated regardless of potential future coastal erosion.
- Having sturdy pipeline infrastructure will increase resiliency in the face of future uncertainty surrounding bluff erosion.

# When will this Happen?



- Most of the Construction will occur in 2025.
- There may be some early work in second half of 2024.

# How Can I Stay Informed?



- CAWD will be conducting extensive public outreach to help inform residents and visitors of this critical infrastructure project.
- We will communicate by utilizing the CAWD website ([cawd.org](http://cawd.org)), direct mailing to residents on affected streets, presentations to community groups, public meetings, and project signage.

# Questions?



Patrick Treanor, P.E.  
District Engineer  
(831) 624-1248  
[treanor@cawd.org](mailto:treanor@cawd.org)

